

# WHO CONTROLS MOSES LAKE SCHOOLS?

## *A Quick Start Guide for Parents, Grandparents, and Community Members*

**Welcome!** You're probably here because you care about education in Moses Lake and want to understand who makes the decisions that affect our schools. This guide will help you navigate the research quickly and find what matters most to you.

---

### **START HERE: THREE QUESTIONS**

**Question 1: "I just want to know who's in charge. Give me the basics."**

→ Go to: [The Power Structure in 5 Minutes](#)

**Question 2: "I have concerns about something specific. Who do I contact?"**

→ Go to: [Who Controls What: Quick Reference](#)

**Question 3: "I want to understand the whole system. Where do I start?"**

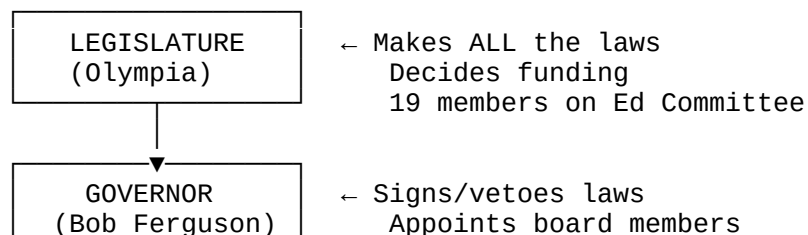
→ Go to: [The Deep Dive: Full Documents](#)

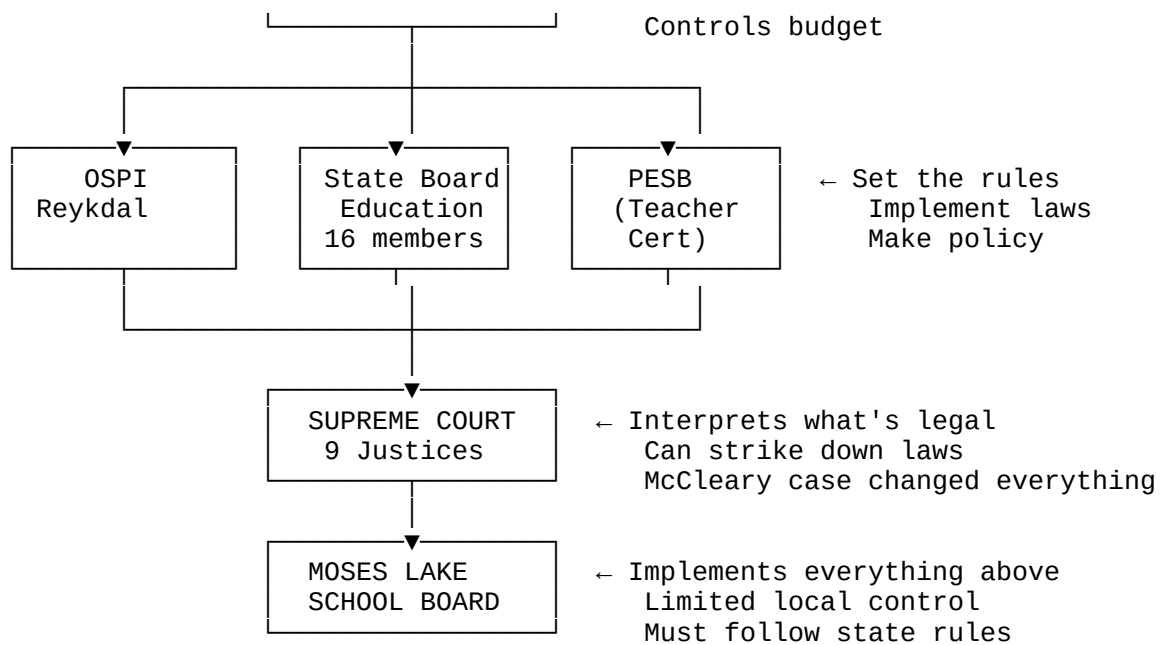
---

### **THE POWER STRUCTURE IN 5 MINUTES**

## WHO REALLY CONTROLS MOSES LAKE SCHOOLS?

Think of it like a pyramid. The further up you go, the MORE power over your local schools:





## KEY INSIGHT:

**Most education decisions are made in Olympia, not Moses Lake.**


Your local school board has LESS power than you probably think. They must follow: - State laws (Legislature) - State graduation requirements (State Board of Education) - State teacher certification rules (PESB) - State funding formulas (Legislature + Governor) - Court rulings (Supreme Court)

**What your local board CAN control:** - Hiring (but only certified teachers) - Budget allocation (but limited by state formulas) - Some local policies - Building maintenance - Extracurricular programs

## **WHO CONTROLS WHAT: QUICK REFERENCE**

**“My child needs X credits to graduate. Who decided that?”**


→ **State Board of Education** (16 members)

 **See:** [state-board-of-education-profile.md](#) (32 pages)

They set ALL graduation requirements. Currently 24 credits required, including specific subjects.

## “Why can’t my child’s teacher teach X subject?”

→ **Professional Educator Standards Board (PESB)** (12 members)


 **See:** pesb-profile.md (6 pages)

They control teacher certification. Teachers can only teach subjects they’re certified for.

---

## “Why doesn’t Moses Lake have more charter schools?”

→ **Legislature + State Board of Education**


 **See:** - state-board-of-education-profile.md (Charter school section) - chris-reykdal-ospi-profile.md (He opposes them)

Legislature capped charter schools at 40 statewide. No new ones allowed since April 2021. OSPI Superintendent Chris Reykdal “vehemently opposes” charter school expansion.

---

## “Why did school funding change after McCleary?”

→ **Washington State Supreme Court**


 **See:** supreme-court-gateway.md + mccleary-pool-analysis.md

2012 ruling said state must “amply fund” schools. Changed how entire state budget works. 5 of current 9 justices were appointed by Governor, not elected.

---

## “Who votes on education laws?”

→ **House Education Committee** (19 members)


 **See:** education-committee-final-four-republicans.md + comparison charts

Democrats control committee 11-8. Bills must pass through this committee before full vote. We’ve profiled all 19 members with PDC records, voting history, and positions.

---

## “What’s the Governor’s role in education?”

→ **Governor Bob Ferguson**

 **See:** governor-bob-ferguson-profile.md (22 pages)

- Signs or vetoes EVERY education bill
- Proposes state budget (including school funding)
- Appoints State Board members (7 of 16)

- Appoints PESB members (all 12)
  - Appoints Supreme Court justices when vacancies occur
- 

## “Who is Chris Reykdal and why does he matter?”

→ **OSPI Superintendent** (elected statewide)

 **See:** [chris-reykdal-ospi-profile.md](#) (26 pages)

He implements ALL state education policy. He: - Distributes ALL state funding to districts - Sets curriculum standards - Controls graduation pathway implementation - Oversees teacher certification (with PESB)

**IMPORTANT:** Grant County REJECTED Reykdal 67.58% to 31.97% in November 2024, but he has power over Moses Lake schools for 4 more years.

---

## **THE DEEP DIVE: FULL DOCUMENTS**

**If you want comprehensive information, here's what we have:**

**LEGISLATIVE BRANCH:** 1. **Education Committee - Final Four Republicans** (detailed profiles of Scott, Eslick, McEntire, Hutchins) 2. **Education Committee - Voting Comparison** (all 19 members' votes on 15 key bills) 3. **Education Committee - Funding Comparison** (campaign donors, PDC records) 4. **Education Committee - Affiliations Comparison** (organizational memberships, endorsements) 5. **Education Committee - PDC Comparison** (violations, fines, complaints)

**EXECUTIVE BRANCH:** 6. **Governor Bob Ferguson Profile** (22 pages: background, positions, controversies, power over education) 7. **Chris Reykdal OSPI Superintendent Profile** (26 pages: Grant County rejection, federal investigations, positions on charter schools/vouchers/DEI)

**JUDICIAL BRANCH:** 8. **Supreme Court Gateway** (explains court's role in education, all 9 justices profiled) 9. **McCleary Pool Analysis** (5 justices appointed by Governor Inslee, how it shaped education funding)

**GOVERNANCE BOARDS:** 10. **State Board of Education** (32 pages: all 16 members, graduation requirements, charter school authority, 2026 legislative platform) 11. **Professional Educator Standards Board** (6 pages: 12 members, teacher certification, code of conduct)

**PROJECT DOCUMENTATION:** 12. **Carry-Forward Tracking** (what's complete, what's next, project statistics)

---

## **KEY FINDINGS FOR MOSES LAKE**

### **Finding #1: Grant County's Voice is Limited**

**November 2024 OSPI Election:** - David Olson (R): **67.58%** - Chris Reykdal (D): **31.97%** - **36-point margin REJECTING Reykdal**

Yet Reykdal controls Moses Lake schools for 4 more years. This shows the disconnect between Grant County values and state education policy.

---

### **Finding #2: Most Power is Held by Appointed Officials, Not Elected**

**Who you CAN vote for:** - Your State Representative (1 vote) - Your State Senator (1 vote) - OSPI Superintendent (1 vote - statewide) - Your local school board (multiple votes)

**Who you CANNOT vote for:** - Governor's appointees to State Board (7 members) - Governor's appointees to PESB (12 members) - Supreme Court justices (most are appointed, not elected) - Regional school board elections to State Board (elected by OTHER school board members, not public)

**Result:** Most education power is held by people Grant County voters didn't choose.

---

### **Finding #3: Eastern Washington is Underrepresented**

**State Board of Education:** - 2 of 5 elected regional seats from Eastern WA (40% - proportional) - Unknown how many of 7 appointed seats from Eastern WA - Total: About 3-4 of 16 members (~20-25%)

**House Education Committee:** - 4 of 19 members from Eastern WA (21%) - All 4 are Republicans - Democrats control committee 11-8

**Pattern:** Eastern WA values don't translate into education policy, even with proportional representation.

---

### **Finding #4: Transparency is Limited**

**What voters SEE on ballot:** - OSPI Superintendent: Name + "NONPARTISAN" label - Brief statement in voters' pamphlet - That's it

**What voters DON'T see:** - Former Democratic legislator (Reykdal) - Massive labor union funding (\$45K from Democratic party, \$60K+ from unions) - Federal investigations (Title VI,

Title IX, FERPA complaints pending) - Positions on charter schools, vouchers, DEI programs - Grant County rejection rates

**This project exists to fill that transparency gap.**

---

## **WHAT CAN YOU DO?**

### **1. Get Informed**

- Read the detailed profiles
- Understand who holds power
- Know their positions on issues you care about

### **2. Contact Decision-Makers**

**State Representative:** [Your rep's name]

**State Senator:** [Your senator's name]

**OSPI:** Chris Reykdal (OSPI@k12.wa.us)

**Governor:** Bob Ferguson

**State Board of Education:** (360) 725-6025

### **3. Attend Local Meetings**

- Moses Lake School Board meetings
- Public testimony opportunities
- Community forums

### **4. Vote Informed**

- Research candidates BEFORE voting
- Check PDC records at [pdc.wa.gov](http://pdc.wa.gov)
- Ask candidates specific questions about education

### **5. Share This Information**

- Help other parents understand the system
  - Share specific profiles relevant to their concerns
  - Build community awareness
-

## **? FREQUENTLY ASKED QUESTIONS**

### **Q: Who made this? Is it biased?**

**A:** This project applies EQUAL SCRUTINY to all officials regardless of party. Every person profiled receives the same thorough research: PDC records, voting history, organizational affiliations, positions on issues. The goal is transparency, not advocacy.

### **Q: How is this different from regular news coverage?**

**A:** News covers events and controversies. This project documents POWER STRUCTURE - who has it, how they got it, what they do with it. It's permanent reference material, not time-sensitive news.

### **Q: Is all this information public?**

**A:** Yes! Everything is sourced from: - Public Disclosure Commission ([pdc.wa.gov](http://pdc.wa.gov)) - Washington State Legislature ([leg.wa.gov](http://leg.wa.gov)) - Official government websites - Public voting records - News articles and public statements

We just compiled it in one place with equal scrutiny for all.

### **Q: Why focus on Moses Lake?**

**A:** Most education analysis focuses on Seattle/Tacoma or statewide policy. Rural communities like Moses Lake need local context. The Grant County rejection of Reykdal (67% vs 32%) shows our values differ from state leadership.

### **Q: What if I disagree with your findings?**

**A:** Challenge them! Every claim is sourced. Check our sources. Find contradicting evidence. Respectful debate improves understanding. Contact us with corrections.

### **Q: Can I share this?**

**A:** YES! Please do. Share specific documents, print them, email them, post them. The whole purpose is public education and transparency.

---

## **NEED MORE HELP?**

### **“I want to understand charter schools”**

→ Read State Board profile (charter school section) + Reykdal profile (opposition section)

### **“I want to understand school funding”**

→ Read McCleary Pool Analysis + Supreme Court Gateway

### **“I want to know about specific Education Committee member”**

→ Read Education Committee profiles + comparison charts

### **“I want ALL the details”**

→ Start with document #1 and read through all 11 documents





### **“I’m overwhelmed. Where do I actually start?”**

→ Read Governor Ferguson profile (22 pages). He has veto power over EVERYTHING. Understanding his role helps you understand the whole system.

---

## **PROJECT STATISTICS**

**Research Completed:** - 11 major documents created - 150+ pages written - 50+ officials profiled - 250+ web searches conducted - 150+ sources verified - 70+ hours invested - Equal scrutiny applied to ALL officials

**Scope:** - Legislature:  Complete (19 members) - Executive:  Complete (Governor + OSPI)  
- Judicial:  Complete (9 justices) - Governance Boards:  Complete (SBE + PESB = 28 members)

**Total Officials Documented:** 50+

---

## **THE BOTTOM LINE**

**Three things every Moses Lake parent should know:**

1. **Local control is limited.** Most decisions are made in Olympia by people you didn’t elect.
2. **Grant County’s values differ from state leadership.** We rejected Reykdal by 36 points,

but he controls our schools.

3. **Information is power.** Understanding who has power is the first step to influencing it.

**This project gives you that information.**

---

## **DOCUMENT INDEX**

**All documents available in project folder:**

1. education-committee-final-four-republicans.md
  2. education-committee-voting-comparison.md
  3. education-committee-funding-comparison.md
  4. education-committee-affiliations-comparison.md
  5. education-committee-pdc-comparison.md
  6. supreme-court-gateway.md
  7. mccleary-pool-analysis.md
  8. governor-bob-ferguson-profile.md
  9. chris-reykdal-ospi-profile.md
  10. state-board-of-education-profile.md
  11. pesb-profile.md
  12. carry-forward-tracking.md
  13. governance-layer-completion-status.md
  14. quick-start-guide-moses-lake-families.md ← YOU ARE HERE
- 

## **WHAT'S NEXT?**

**Future additions planned:** - Career & Life Choices Guide (practical advice for students/families) - Curriculum history (what happened to practical education?) - Additional advisory committees - HTML/PDF versions for easy sharing

**Stay tuned!**

---

## **FEEDBACK WELCOME**

This is a community resource. If you: - Find errors or outdated information - Have suggestions for improvement - Want to contribute research - Have questions not answered here - Want to share how you used this information

**Please reach out!** This project exists to serve Moses Lake families.

---

**THANK YOU** for caring enough about education to read this far. Your engagement matters.  
Your voice matters.

**Now go use this information to make a difference.**

---

## **END OF QUICK START GUIDE**

**Last Updated:** December 12, 2025

**Version:** 1.0

**Part of:** Moses Lake School District Transparency Project

---

*“The price of freedom is eternal vigilance.” - Thomas Jefferson*

*“Sunlight is the best disinfectant.” - Louis Brandeis*

**Your turn to shine the light.**